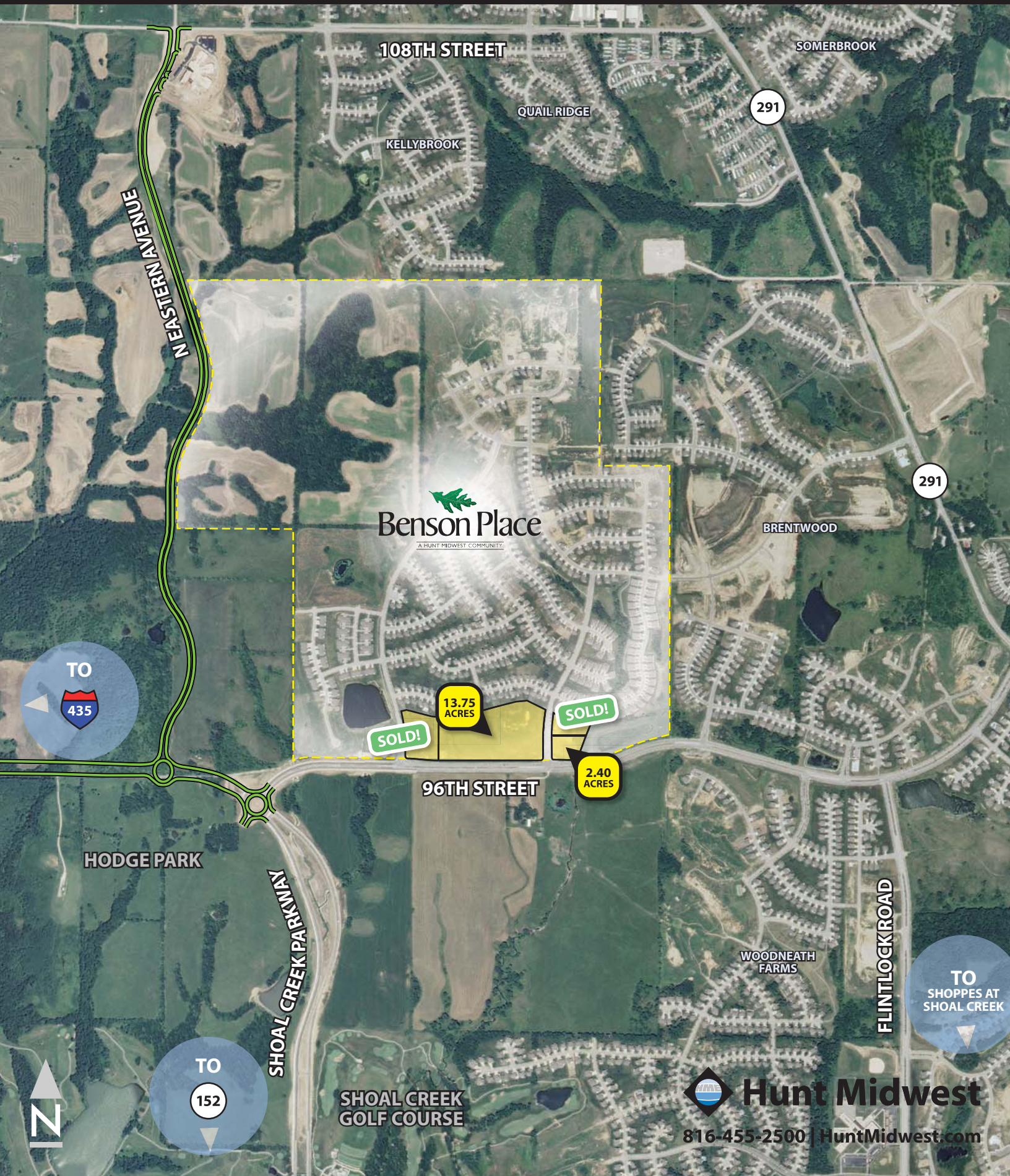


MIXED-USE SITE | BENSON PLACE, THE COMMONS

I-435 & 96TH STREET | KANSAS CITY NORTH



108TH STREET

SOMERBROOK

QUAIL RIDGE

291

KELLYBROOK

N EASTERN AVENUE

291


Benson Place
A HUNT MIDWEST COMMUNITY

BRENTWOOD

TO



SOLD!

13.75 ACRES

SOLD!

2.40 ACRES

96TH STREET

HODGE PARK

SHOAL CREEK PARKWAY

WOODNEATH FARMS

FLINTLOCK ROAD

TO
SHOPPES AT
SHOAL CREEK

TO

152



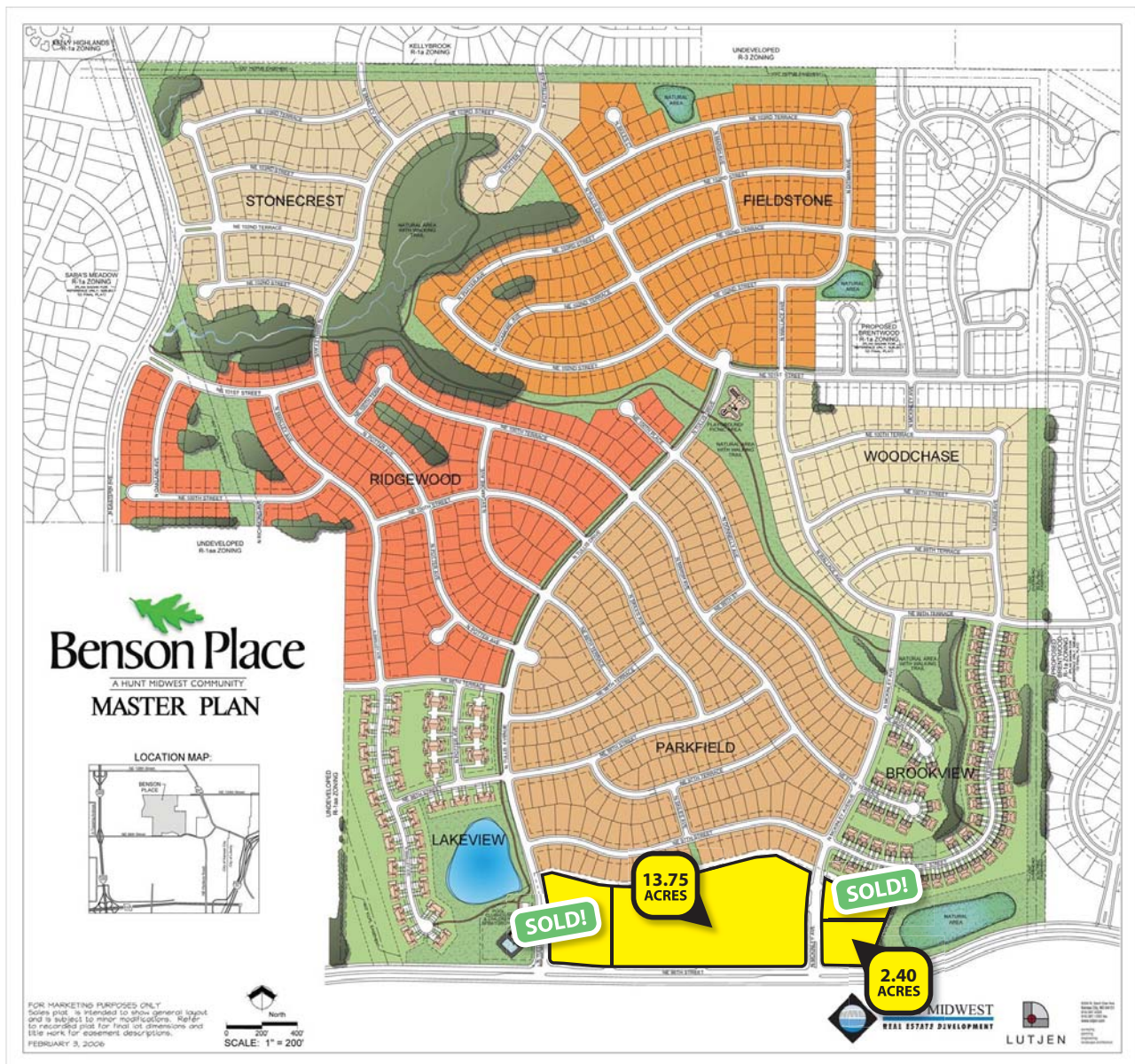
SHOAL CREEK GOLF COURSE



Hunt Midwest

816-455-2500 | HuntMidwest.com

Site Plan



Site Location Features

- master-planned community planned for more than 1,300 homes
- easy access to I-435, MO-152, MO-291 and I-35
- close to MO-152 and Flintlock retail corridor and Liberty triangle retail area
- all utilities on site
- high growth area
- excellent location for office, school, multifamily and senior housing

Need something different? Here are some additional mixed-use sites available from Hunt Midwest:

Northgate Village (Retail/Mixed-Use Sites), Staley Hills (Mixed-Use Site), Riverstone (Mixed-Use Site), Eagle Creek (Residential Site), Timber Trails (Multi-Family Site), Fox Creek (Townhome Site), Stollings Ranch (Residential Site) and Hook Farm (Mixed-Use Site)



Hunt Midwest

816-455-2500
www.HuntMidwest.com

For more information,
please contact Brenner Holland.

Hunt Midwest Real Estate Development
8300 NE Underground Drive, Suite 100
Kansas City, MO 64161