

FIVE STAR LOGISTICS PARK

UP TO 800,000± SF AVAILABLE FOR BUILD-TO-SUIT

I-435 & N Congress Avenue
Kansas City, MO 64153



FIVE STAR
LOGISTICS PARK



BUILD-TO-SUIT

UP TO 800,000± SF AVAILABLE FOR BUILD-TO-SUIT

**20-YEAR TAX ABATEMENT
\$0.05 PSF YEARS 1-5**



FOR MORE
INFORMATION
CONTACT

RYAN TOMPKINS
816.206.4347
RTompkins@HuntMidwest.com

MARK C. LONG
816.512.1011
mlong@nzimmer.com

JOHN F. HASSLER
816.267.4208
jhassler@nzimmer.com

SCOTT E. BLUHM
816.268.4224
sbluhm@nzimmer.com

NEWMARK

FIVE STAR LOGISTICS PARK

UP TO 800,000± SF AVAILABLE FOR BUILD-TO-SUIT

SITE PLAN - 800,000± SF BUILDING

I-435 & N Congress Avenue

Kansas City, MO 64153



BUILDING I

BUILDING SIZE 800,000± SF

DIMENSIONS 520' x 1,540'

CAR PARKING 620+

TRAILER PARKING 224

TRUCK COURT 200'

FIVE STAR LOGISTICS PARK is conveniently located in the logistics epicenter of the United States with immediate access to the Kansas City International Airport (KCI/MCI) Air Cargo Hub.

- ◆ 20-YEAR TAX ABATEMENT - \$0.05 PSF YEARS 1-5
- ◆ Ideally positioned for a large-scale user in the manufacturing, distribution, e-commerce, and technology sectors
- ◆ 61 acres
- ◆ Superior access to transportation hubs, highways and large labor force
- ◆ Utilities onsite

FIVE STAR LOGISTICS PARK

UP TO 800,000± SF AVAILABLE FOR BUILD-TO-SUIT

SITE PLAN - TWO 400,000± SF BUILDINGS

I-435 & N Congress Avenue

Kansas City, MO 64153



BUILDING I

BUILDING SIZE 400,000± SF

DIMENSIONS 520' x 770'

CAR PARKING 328+

TRAILER PARKING 112

TRUCK COURT 200'

BUILDING II

BUILDING SIZE 400,000± SF

DIMENSIONS 520' x 770'

CAR PARKING 293+

TRAILER PARKING 112

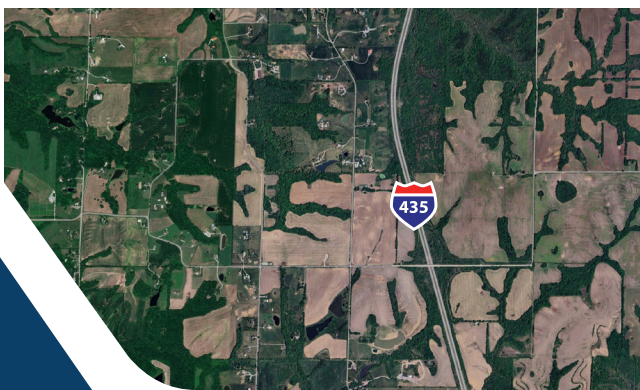
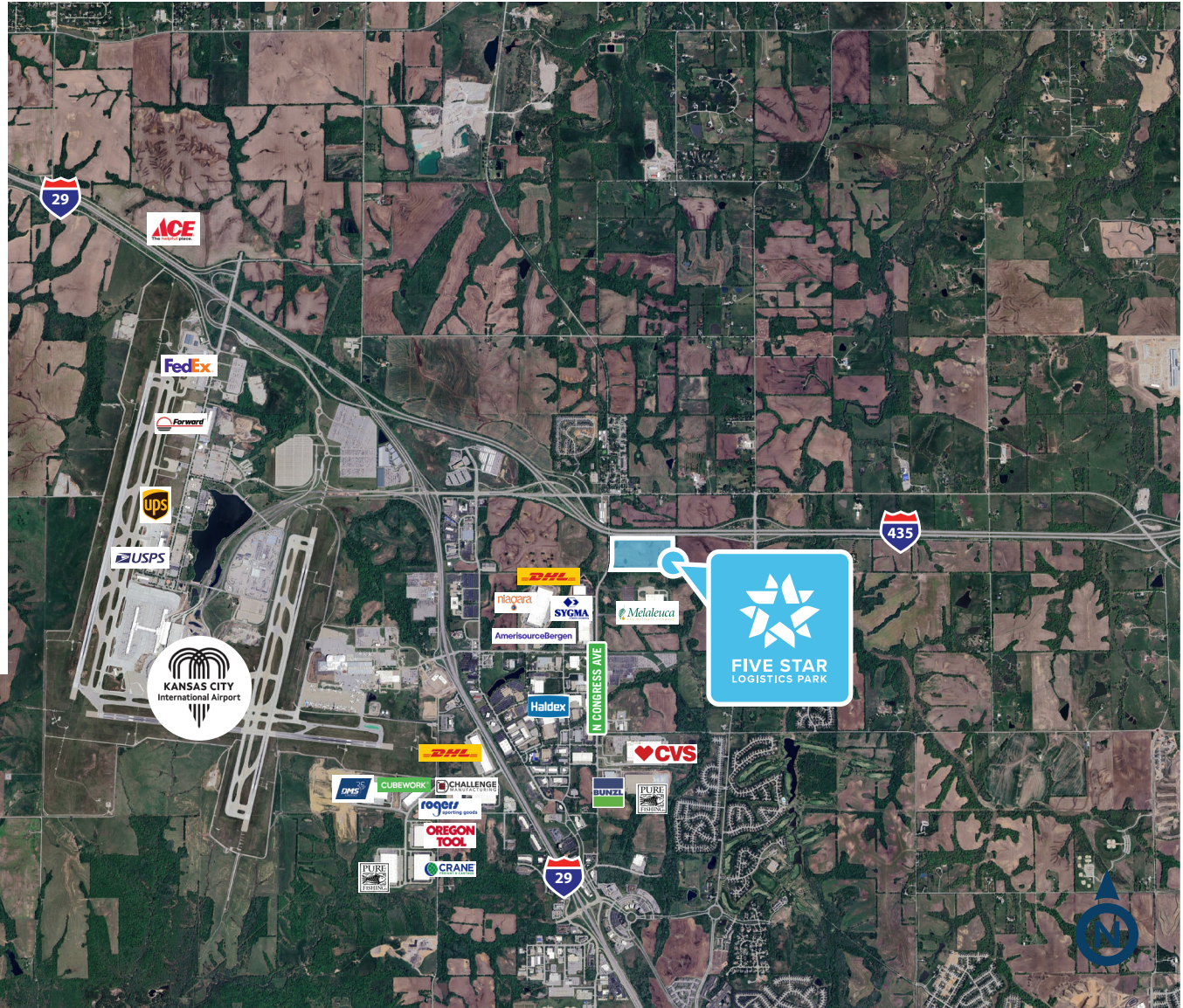
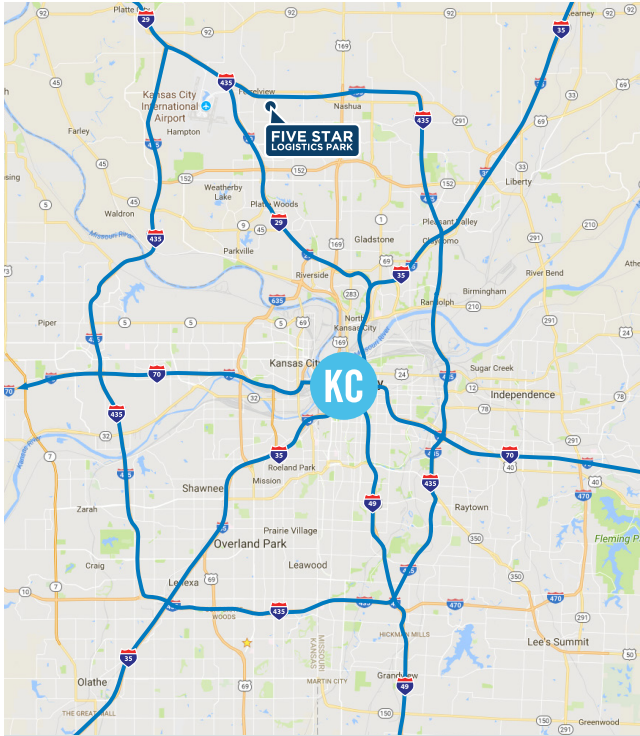
TRUCK COURT 200'

- ◆ Adjacent to I-435 and I-29
- ◆ Just two miles from the KCI Air Cargo Hub and the new 3,300-acre KCI 29 Logistics Park megasite
- ◆ Immediate access to FedEx, UPS, USPS, and Amazon Prime Air services
- ◆ 2-day shipping to 90% of the U.S.

FIVE STAR LOGISTICS PARK

UP TO 800,000± SF AVAILABLE FOR BUILD-TO-SUIT

LOCATION MAP
I-435 & N Congress Avenue
Kansas City, MO 64153



FOR MORE INFORMATION CONTACT
RYAN TOMPKINS
816.206.4347
RTompkins@HuntMidwest.com

MARK C. LONG
816.512.1011
mlong@nzimmer.com

JOHN F. HASSLER
816.267.4208
jhassler@nzimmer.com

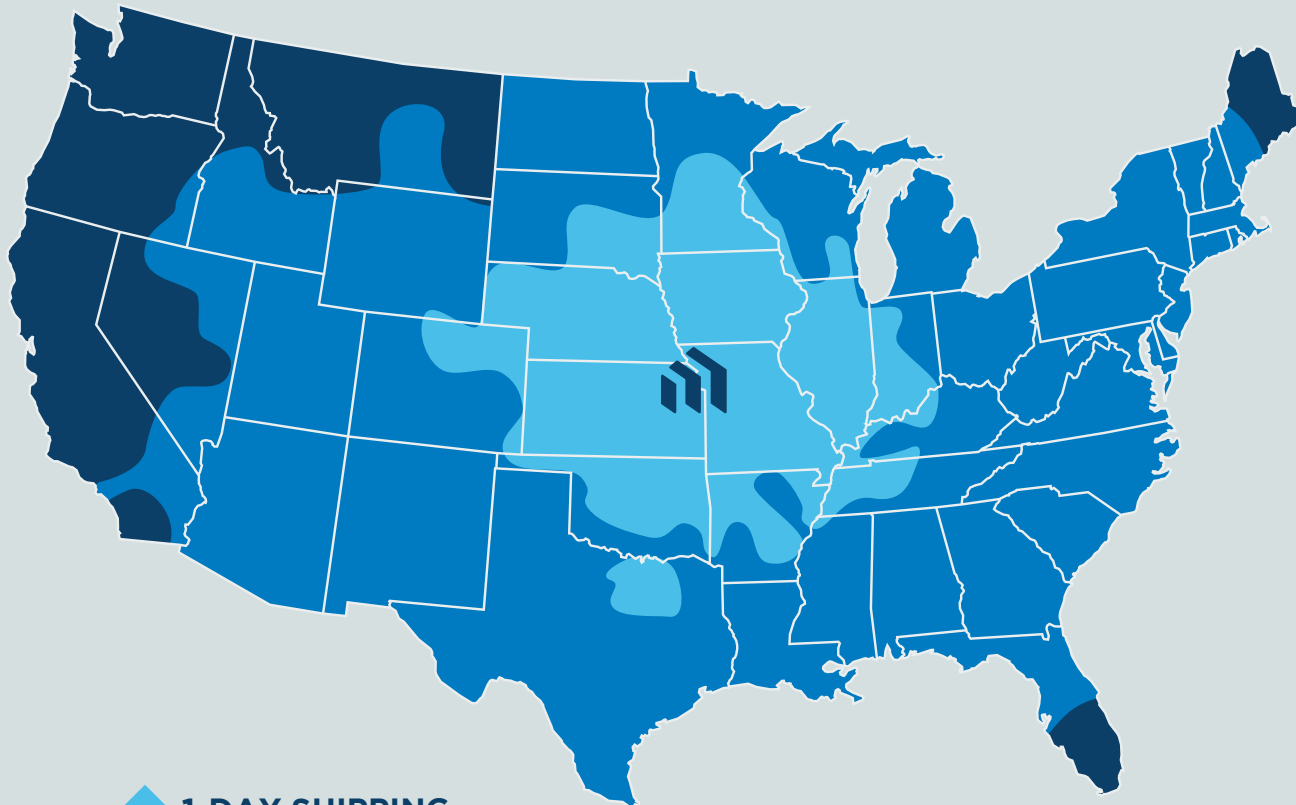
SCOTT E. BLUHM
816.268.4224
sbluhm@nzimmer.com



FIVE STAR LOGISTICS PARK

UP TO 800,000± SF AVAILABLE FOR BUILD-TO-SUIT

I-435 & N Congress Avenue
Kansas City, MO 64153



- ◆ 1-DAY SHIPPING
- ◆ 2-DAY SHIPPING
- ◆ 3-DAY SHIPPING

Five Star Logistics Park is located in the exact geographic center of the U.S. in Kansas City, MO

2-DAY
SHIPPING TO
90%
OF THE U.S.



FOR MORE
INFORMATION
CONTACT

RYAN TOMPKINS
816.206.4347
RTompkins@HuntMidwest.com

MARK C. LONG
816.512.1011
mlong@nzimmer.com

JOHN F. HASSLER
816.267.4208
jhassler@nzimmer.com

SCOTT E. BLUHM
816.268.4224
sbluhm@nzimmer.com

NEWMARK