

Shoal Creek Parkway Project Update

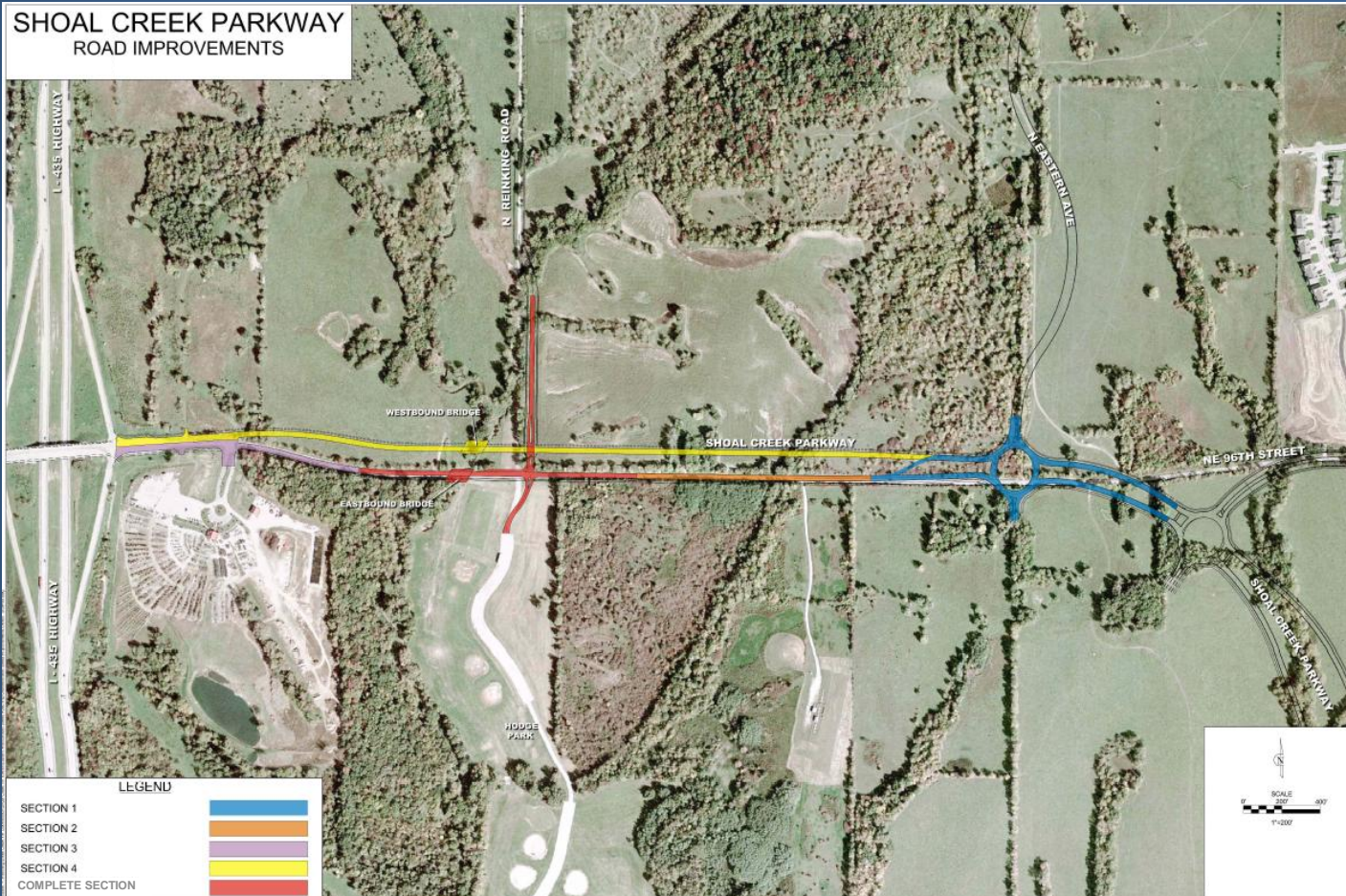
7-1-10



HUNT MIDWEST
RESIDENTIAL DEVELOPMENT



SHOAL CREEK PARKWAY ROAD IMPROVEMENTS



Construction – Construction began with road closure on May 10. The following are the main construction items and their percentage of completion.

- Utility Relocation – 100% complete
- Clearing – 100% complete
- Box Culvert – 100% Complete
- Grading – 50% complete
- Storm Sewer – 40% complete
- Curbs – 0% complete
- Paving – 0% complete
- Streetlights – 0% complete

Improvement completion of sections 1, 2 and 3 with road re-opened – winter of 2010/2011

Improvement completion of section 4 – summer of 2011

